

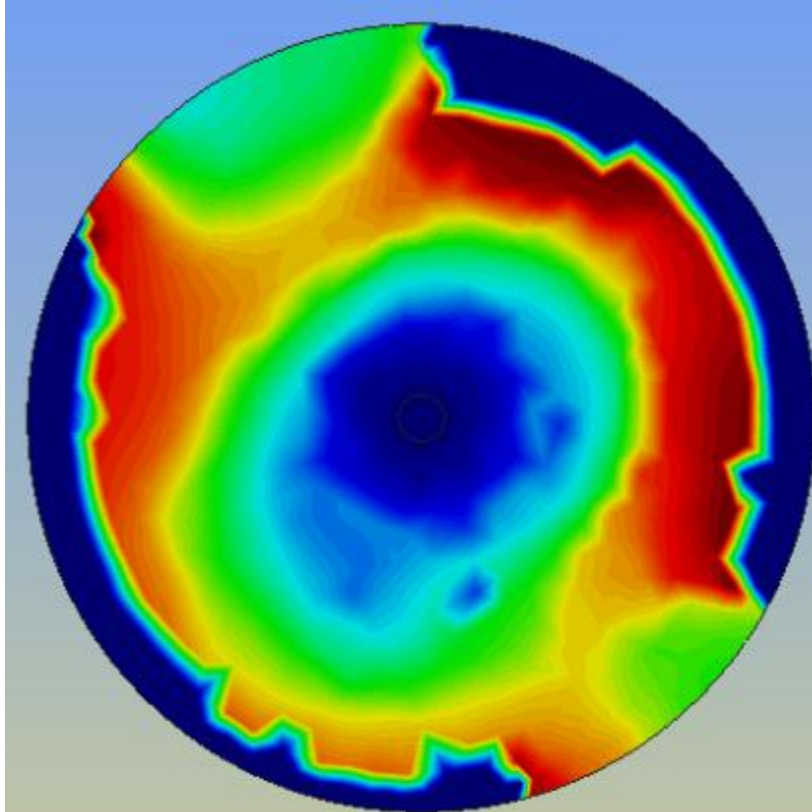
Question 1403181530

Mould filling with different mesh size.

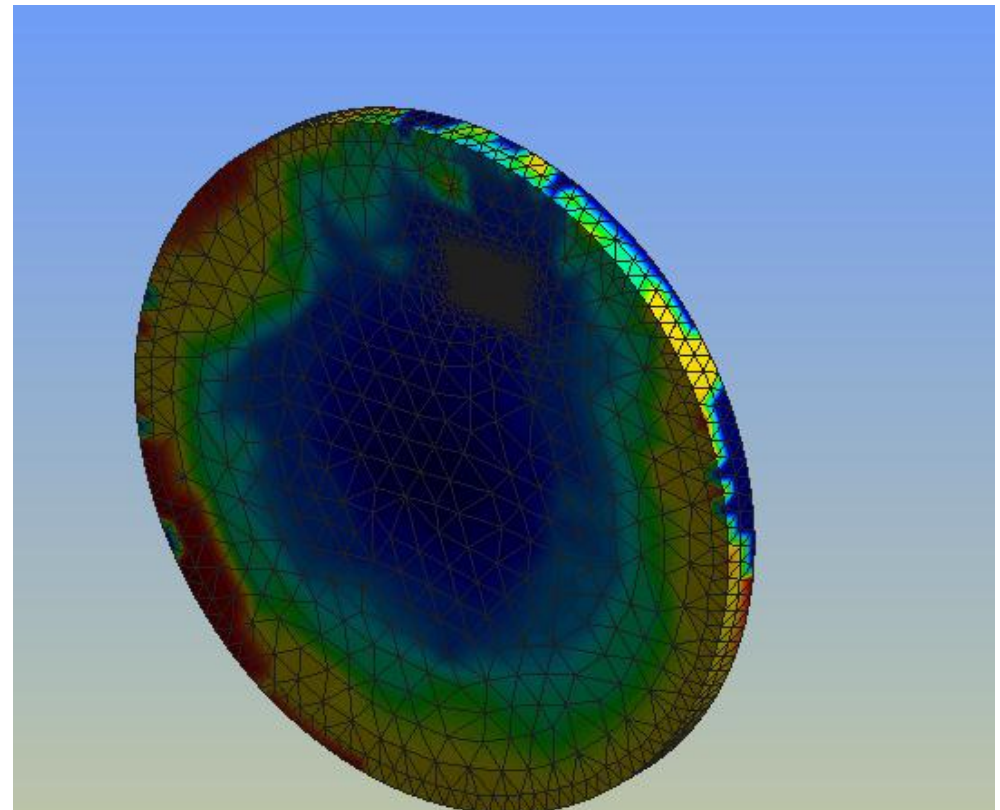
Vulcan

- Mould filling

If we do a simulation with the right size of mesh we get reasonable results (left) but when remeshing locally the flow is changed (right).



step 3.8252
Contour Fill of FILLTIME (s).



step 3.8338
Contour Fill of FILLTIME (s).

- Mould filling

After decreasing time step with a simulation time of 4 hours results are OK.

